

# AS LA SD

**NEWSLETTER**  
**SUMMER 2025**



**MERIT AWARD: 525 OLIVE**  
**URBAN ARENA**





[asla-sandiego.org](http://asla-sandiego.org)

## VISION

A world where the built and natural environments coexist in harmony and sustainable balance, where all peoples can express their diverse heritage and their individual desires to grow and thrive; and where we, as a profession, can substantially contribute to the process of achieving these ends.

## MISSION

To lead, to educate and to participate in the careful stewardship, wise planning and artful design of our cultural and natural environments.

# IN THIS ISSUE

SUMMER 2025



## 4 President's Message

KATHRYN KANAAN, ASLA



## 9 Lakeside River Park Conservancy Update

DIFAN CHEN, ASLA



## 15 Climate Action Committee Update

STEPHANIE GREEN, ASLA



## 24 ACE Mentorship & ASLA Partnership

TRISTA GARCIA SILVIA, ASLA

SOCIAL PROGRAMS UPDATE .....	<a href="#">8</a>
EMERGING PROFESSIONALS UPDATE .....	<a href="#">13</a>
CCASLA UPDATE .....	<a href="#">19</a>
MEMBERSHIP ANNIVERSARIES .....	<a href="#">22</a>
TRUSTEE UPDATE .....	<a href="#">26</a>

ASLASD UPCOMING EVENTS .....	<a href="#">27</a>
ASLA EXECUTIVE COMMITTEE .....	<a href="#">28</a>
CCASLA & NATIONAL EXECUTIVE COMMITTEE .....	<a href="#">29</a>
SPONSORS .....	<a href="#">30</a>



# PRESIDENT'S MESSAGE



ABOUT THE AUTHOR  
**KATHRYN KANAAN, ASLA**  
PRESIDENT

## WHO IS YOUR SUPER HERO?



To be cliché, where has the time gone? It is the middle of July, the All-Star baseball game is being played (I'm not complaining for it is quiet here in the Ball Park district), the window for vacation is closing before the kids go back to school, and Comic-Con is fast approaching. This makes me wonder, who is your Super Hero?

My Super Hero is Woodrow Wilson for creating the national parks Service so we, over 100+ years later, can enjoy jewels like Yellowstone, Yosemite, Joshua Tree and the Channel Islands to name a few. There are 9 in California alone. How many have you hiked in, connected with nature in, and cherished memories in? Time in nature is what our profession is all about.

"There is always that one summer that changes you."  
- Beth Merlin

I can think of a perfect way you can be a hero and be changed in ways you cannot imagine, Volunteer for the Board. We are looking for two Executive Board Positions to be filled for the 2025/2026 year, starting in November, and they are President-Elect (3-year term) and Secretary (1 year term). President-Elect allows you to meet the drivers from around

**GO OUTSIDE AND SPEND SOME TIME IN NATURE, FOCUS ON WHY YOU ARE IN AND LOVE THIS PROFESSION, AND MOST OF ALL COME JOIN THE BOARD AND ADVOCATE FOR YOUR COLLEAGUES!**



the United States and connects you with DC in a personal way. It helps you understand what is important for both our local chapter and on a national level. This position really opens your eyes to everything that is going on in the background to protect your licensure, change unfair insurance clauses, fight for government funding for your projects, and the pulse of the rest of the country. Please give these important roles consideration for without volunteers, you would not have advocates for your chapter. If you have any questions about these positions, please give Amy a call or email at [aslasd@asla-sandiego.org](mailto:aslasd@asla-sandiego.org) Ph 619-733-6538. If you want to ask me what my experience has been I would be glad to grab some coffee or lunch and discuss it with you.

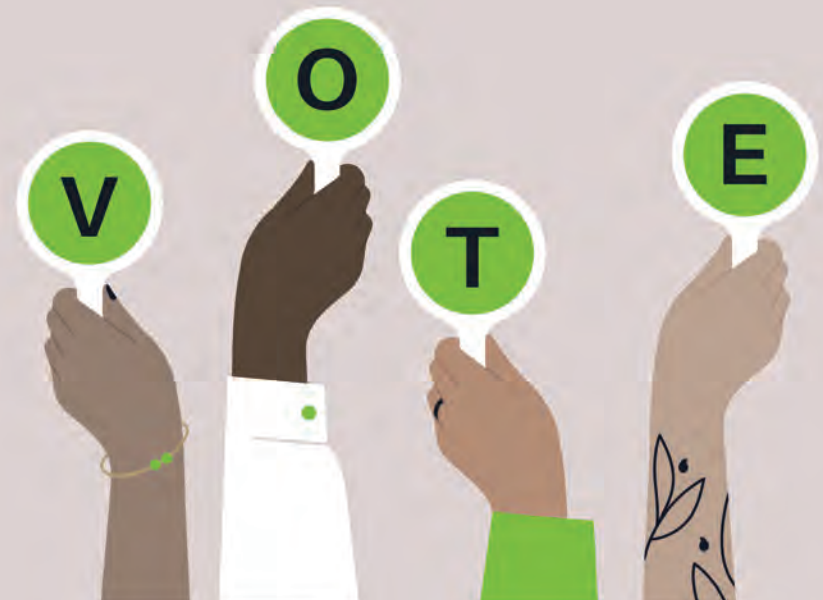
[kathryn@kda-landscapearchitects.com](mailto:kathryn@kda-landscapearchitects.com)

Ph 619-840-5174.

**Volunteering is grooming the next generation of LA's, it is advocating for our profession and the environment, and leading the charge.** Two of our members have, and continue to do just that. I want to extend my personal congratulations to our very own Patricia Trauth and Jon Wreschinsky for being elevated to Fellow status. We are beyond proud and these rock stars achieved this on their first try!

**Share your talents and creativity  
while growing your leadership  
skills and network.**

**NOMINATE YOURSELF OR A PEER**



There are more ways you can make an impact locally by applying for 6 available board positions in the City of San Diego.

- » **Community Forest Advisory Board** - District 5 citizen seat is vacant.
- » **Historic Resource Board** is still showing an available seat with the retiring of David McCullough. Thank you, David, for the years of service to this City!
- » **Parks and Rec Board** has two available seats. It is so important that Landscape Architects have a seat here.
- » **Resiliency Advisory Board** - District 4 and 9 would greatly benefit from a Landscape Architect having a voice for we are the bridge for all disciplines.

Please apply here: <https://www.sandiego.gov/boards-and-commissions/list>



There is an exciting event coming up and I hope you heard about it and signed up, but just in case, [30x30 Partnership Summit](https://www.californianature.ca.gov/pages/2025-partnership-summit-field-trips~a657fe5c10ea4254bdefd02f257f710f) will be here in Balboa Park on August 14th with Field Trips occurring on the 15th. There are many amazing field trips around the county and our 2025 Tracy Morgan Hollingworth Community Grant winner, Lakeside River Park Conservancy, is on that list. Sign up quick for space is filling up on these diverse field trips. <https://www.californianature.ca.gov/pages/2025-partnership-summit-field-trips~a657fe5c10ea4254bdefd02f257f710f>

Go outside and spend some time in nature, focus on why you are in and love this profession, and most of all come join the Board and advocate for your colleagues!

### Reminders:

Great free webinars from ASLA National:  
<https://www.asla.org/onlinelearning.aspx>

Don't forget to take a regular look at our calendar on the website for fun events coming up.  
<https://www.asla-sandiego.org/events/month/>



# T.B. PENICK & SONS, INC.

For more than a century, T.B. Penick & Sons, Inc. has been a trusted leader in providing innovative concrete materials and finishes to owners, architects, contractors, and specifiers like you. Our deep-rooted expertise allows us to deliver cutting-edge solutions that elevate the durability, aesthetics, and functionality of every project. Whether working on large-scale commercial developments, or intricate architectural designs, we are committed to delivering excellence through advanced construction techniques and unparalleled craftsmanship.

We take pride in collaborating closely with our clients, ensuring that each project reflects their unique vision while meeting the highest standards of quality and performance. From concept to completion, our team is dedicated to maintaining the integrity of your design intent. With meticulous attention to detail and a passion for innovation, we bring creative ideas to life, transforming ordinary spaces into extraordinary environments that stand the test of time.

Beyond craftsmanship and innovation, we recognize the growing importance of sustainability in today's built environment. Our advanced concrete solutions can help you achieve your sustainability goals, including lowering your project's carbon footprint. By integrating eco-friendly materials and durable finishes that reduce long-term maintenance needs, we contribute to greener, more resilient concrete. Our expertise in sustainable design ensures that your project aligns with environmental best practices without compromising quality or aesthetic appeal.

At T.B. Penick & Sons, Inc., we believe in building lasting relationships founded on trust, integrity, and shared success. We look forward to partnering with you, providing the knowledge and resources necessary to turn your vision into reality. From assisting with specification writing and no-cost sample development to cost budgeting and full project installation, we are committed to making the process seamless and efficient. Our expertise ensures that your project is not only beautiful and functional but also cost-effective and environmentally responsible. Together, we can create spaces that stand the test of time while meeting the highest standards of quality and sustainability.



**SINCE 1905, WE'VE BEEN ENSURING YOUR DESIGN INTENT IS REALIZED.**

Schedule a presentation or showroom visit and put our expertise to work on your next project.

Call Marketing at 858-558-1800. Find us on 

[www.TBPenickICS.com](http://www.TBPenickICS.com)

# BUILDING COMMUNITIES THROUGH CREATIVITY AND CONNECTION



ABOUT THE AUTHOR

**Anne-Emilie Gold, ASLA**

CO-VP OF SOCIAL PROGRAMS

**The ASLA San Diego Chapter has been busy cooking up meaningful opportunities for its members to connect, recharge, and be inspired.**

Our 2025 calendar features a series of social events designed to spark creativity, deepen professional bonds, and celebrate our shared love of landscapes.

We kicked off this summer with a lovely hike, offering a chance to reconnect with nature and fellow members on the trail. On Saturday August 9th, we are thrilled to present a daytime Sketch Crawl in Balboa Park, led by local fine artist and arts educator Jacqueline Gold. This unique event will blend informal art instruction with social time on the great lawn by the new Botanical Garden Building with drinks and bites. Whether you are a seasoned sketcher or a curious beginner, it will be a great opportunity to observe, draw, and enjoy the park in good company. You can sign up here! Looking ahead to the fall, join us on September 20 for a Landscape Photography Tutorial and Happy Hour. This will be a creative session designed to sharpen your eye behind the lens and capture the landscapes you have designed. Then in November, we will close the season with a



Construction Site Tour and Happy Hour, offering a hands-on look at design in action. More details to come!

From sketching to hiking, photography to tours, our goal is to offer a mix of events that reflect the diverse passions of our members while strengthening our community. We look forward to seeing you there!



# LAKESIDE RIVER PARK CONSERVANCY UPDATE



ABOUT THE AUTHOR

**Difan Chen, ASLA**

VP COMMUNITY OUTREACH

Lakeside's River Park Conservancy is genuinely grateful to ASLA for the Tracy Morgan Hollingworth Community Grant. It is a privilege for us to honor Tracy and to use grant funds to enhance the river park's new San Diego River Science Field Station.

In June, we completed Phase 1 of Field Station landscaping with funding support from the San Diego Chapter of ASLA and volunteer help from CLCA (the California Landscape Contractors Association).

The Field Station is an emerging facility designed to become a destination for students, scientists, and community members to explore nature and practice environmental science at Lakeside's River Park.

In Phase 1, the team built a functional dry stream bed, incorporated native plants and cobblestones, and installed a bioswale to capture stormwater for recharge back into the ground. Plants included three specimen coast live oaks, a series of toyon, white sage and monkeyflower. These species have a long history and cultural significance to indigenous people as well as an ecological role to provide sustenance for local wildlife. We appreciate their beauty as well. High quality mulch was used to finish the site with a polished look while suppressing weeds and conserving water.



**THE CONSERVANCY  
HAS RESTORED  
OVER 100 ACRES  
OF DEPLETED  
SAND MINE.**

COMMUNITY



The river park will continue this work with remaining grant funds, extending the dry bed and bioswale and planting many more plants on site.

Lakeside's River Park Conservancy (LRPC) is a private non-profit whose purpose is to protect the biological integrity of the San Diego River while offering recreational, educational, and cultural opportunities to the community. Since 2001, the Conservancy has restored over 100 acres of depleted sand mine and today, the river park provides critical habitat for wildlife and important ecosystem services to the region.

**For more information, please visit [www.lakesideriverpark.org](http://www.lakesideriverpark.org) or sign up for the monthly newsletter [here](#).**





# TRACY MORGAN-HOLLINGWORTH COMMUNITY GRANT

**LEARN MORE + DOWNLOAD APPLICATION**

The 2026 Tracy Morgan-Hollingworth Community Grant application is available on [SDASLA's website](#) or by emailing the Chapter for information or a copy of the grant application. **The application deadline is September 30, 2025.** Any non-profit community group recognized by the IRS and the Secretary of State, is located in San Diego County, and has been in continuous existence as a non-profit group for a minimum of three years is eligible to receive the grant. Projects must prove that they have the support and involvement of their community and/or environmental interests within San Diego County, and applications must show a clear benefit to the wider community.

ASLA SAN DIEGO NEWSLETTER | SUMMER 2025



# 2025

## ANNUAL GOLF TOURNAMENT MADERAS

OCTOBER 27

**BECOME A  
SPONSOR TODAY!  
SPOTS ARE FILLING  
UP QUICKLY!**

- ✓ TITLE CO-SPONSOR (1 LEFT!)
- ✓ DINNER SPONSOR (2 LEFT)
- ✓ LUNCH SPONSOR
- ✓ BEVERAGE CART
- ✓ TEAM SCORE
- ✓ CLOSEST TO THE PIN (W/M)
- ✓ LONGEST DRIVE WOMEN
- ✓ LONGEST DRIVE MEN
- ✓ PUTTING CONTEST
- ✓ DRIVING RANGE — BLOODY MARY BAR
- ✓ HOLE SPONSORS (6 LEFT)



**Click here to REGISTER TO BE A SPONSOR**





ABOUT THE AUTHOR  
**Gwen Stark, ASLA**  
EMERGING PROFESSIONALS  
CO- CHAIR



ABOUT THE AUTHOR  
**Fernanda Suarez, ASLA**  
EMERGING PROFESSIONALS  
CO- CHAIR

## HELLO EMERGING PROFESSIONALS!

We've had a quiet summer but are looking forward to a few upcoming events in the second half of the year!

In early June, we hosted a virtual portfolio and resume review which provided participants at all stages of their careers with valuable feedback. Thank you again to our reviewers: Eric Ellinwood (MIG), Laura Handschumacher (City of Chula Vista), and Kenya Huezo (LPA) for providing great insight and recommendations on a variety of portfolios submitted.

This fall we are planning a construction site visit at a local project in the San Diego area for our members to learn more about the design process from conceptual planning all the way through construction. We will be announcing locations in the next few weeks so keep an eye out for this exciting event! This is a great opportunity to meet the landscape architects who worked on the project as well as designers from other disciplines and manufacturer's representatives. The tour of the project site will be followed by a casual happy hour.

Following the upcoming round of LARE exams, we will be starting our LARE study groups again in September. Over the past few years, these study groups have been very helpful in creating a community of peers to share useful study resources and methods for the LARE exams which can be very intimidating to get started on. Meetings will occur twice a week: virtually on Wednesday evenings and Sunday mornings in person.

Good luck to all our members taking the LARE exam this August! If you are interested in participating in these study groups or have any questions regarding EPC, please contact **Fernanda Suarez** ([fsuarez@migcom.com](mailto:fsuarez@migcom.com)) or **Gwen Stark** ([grstark98@gmail.com](mailto:grstark98@gmail.com)). We look forward to seeing you all at our upcoming events this fall.



At Dave Bang Associates, we **specialize in solutions** that are balanced: budget and “wow” factor, creativity and function, challenge and safety. With 45+ years of experience and **all the top brands**, we have you covered no matter the project. From concept, design, planning, and ordering, to delivery, storage, install, service, and support, our team of experts will be by your side to make sure your project is a **massive success**.

Picking the right manufacturers to fit your project can make all the difference. That is why we offer the widest selection of park + playground solutions in the industry, **giving you the power** to choose what’s right for your project without the hassle of coordinating with multiple vendors.

since 1979

# dave bang

associates inc.

► park+playground outfitters

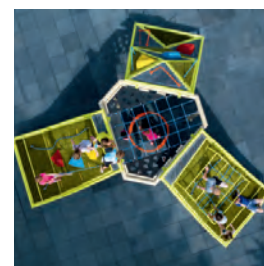
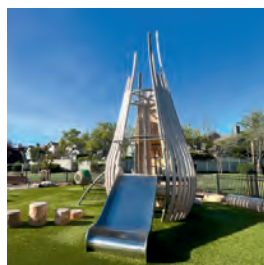
PROUD PLATINUM SPONSOR OF



**ASLA**  
SAN DIEGO  
AMERICAN SOCIETY OF  
LANDSCAPE ARCHITECTS

CONNECT WITH  
US TODAY!





Meet *Your*  
Architect  
Resource  
Manager  
**Anthony**  
**Kenaston**



Anthony is your one stop connection for all park + playground needs. Specializing in collaborating with Landscape Architects, Anthony brings fun, vibrancy, and perspective to your project.

## COMMUNITY + CONNECTION + ADVENTURE

► START YOUR ADVENTURE TODAY 1.800.669.2585 WWW.DAVEBANG.COM



# CLIMATE ACTION COMMITTEE UPDATE



ABOUT THE AUTHOR

**Ashlie Zinn, ASLA**

CLIMATE ACTION COMMITTEE CO-CHAIR

## Re-Root and Re-Structure

In a continuously (chaotically) shifting climate, we see a common call for care: for roots, for relations, for regeneration; a care for strengthened support systems.

## Successful Symposium

In April, we gathered for an energizing day of knowledge sharing and collective visioning at the 2025 [Climate Action Symposium](#), hosted by ASLA Sierra Chapter in Sacramento, CA. Intimate and inspiring, the Sun and Alignments cards from the new [Wisdom of Place](#) deck affirmed the time for leaning into the ancient and complex: to collaborate with the natural systems that long exist.

ASLA CEO Torey Carter-Conneen urged us to better articulate our industry's **economic value**. We may understand the benefits of green infrastructure; Are we communicating the outcomes—and what's at stake—clearly and widely enough?

***"\$1 investment in climate change solutions yields \$4 in environmental, social, and economic benefits"***

We were reminded of the valuable tools, practices, and resources available, and our group's call for expanded knowledge and shift in cultural practices was shared across sessions—from native planting, Miyawaki micro-forests, mulching, composting, decarbonization, fire resiliency, climate equity, and advocacy.



## Symposium / ASLA Resources

[Interagency Treatment Tracker](#)

California Wildfire & Forest Resilience Task Force

[Pocket Forest Map](#) | Sugi Project

[Climate Action Plan & Field Guide](#)

[Maximizing Economic Benefits](#) | [WORKS with Nature](#)

→ [Committee Takeaways](#)

→ [Sierra Chapter Summary](#)

\*Stay tuned to Sierra Chapter's website for the soon-to-launch, **virtual Climate Action Resource Library** featuring a collection of resources from the symposium (and a few bonus resources)!



## Growing the Future

Our committee's working group partners Brian Kempf (Urban Tree Foundation/Wood Architecture) and David Teuschler (formerly Devil Mountain Nursery, now West Coast Arborists) led an engaging session on our initiative: "Growing the Future: Advancing Nursery Stock Quality for Resilient Urban Forests."

Focused and practical, attendees learned how to specify and identify trees with good structural integrity from roots to crown. The success of the session exemplifies the impact of growers, practitioners, and public agencies aligned on a vision of secured quality. Starting with healthy, structurally sound trees ensures the long-term vitality of our urban forests and the ecosystem services we rely on them to provide.

Support our Initiative, Expand your knowledge and standards.

Download open-source, CAD-ready [Planting Details](#), [Specifications](#), and [Cue Cards](#)

→ Courtesy of [Urban Tree Foundation](#)

## Our Biodiverse Public Lands & Waters

Halfway through California's 30x30 Initiative (to conserve 30% of our lands and coastal waters by 2030) we reflect on wins, lessons, and challenges ahead. We're on track, with 25% of lands and 16% of coastal waters already conserved. One of the most biodiverse states, nearly half our land is federally owned and vulnerable to administration changes.



## 30X30 Partnership Summit

Coming to San Diego

Thurs, Aug 14th | Natural History Museum - [register](#)

Fri, Aug 15th | Field Trips - [site sign-up](#)

Continue the conversation on how to  
"Sustain, Strengthen, and Succeed"

Proposed cuts are being made to the  
[Land and Waters Conservation Fund \(LWCF\)](#),

a principal source for environmental funding.

[\[Tell Congress to protect our public lands and parks →\]](#)

Public lands may also be up for sale, removing safeguards  
against resource mining.

[\[Tell Senators to stop the sale →\]](#)

## Returning to Heart

Echoed across the symposium, webinars, and professionals are calls to **work from the heart**: to deepen connection to values, community, nature and its systems to shift cultural practice towards returned stewardship.

To be [cocreators of our future](#) we must be aware, engaged, and **compassionately active** participants in change.



PROFESSIONAL SYMPOSIUM PHOTOS BY [GARRET SPENST](#)

## “CURIOSITY, CAREFUL OBSERVATION, AND EXPERIMENTATION ARE OUR BEST TOOLS FOR ADAPTING TO CLIMATE CHANGE(S)”

- Unifying Climate Resiliency and Biodiversity through the Relationships of Native Plants,  
Symposium session by Carol Maxwell & Chris Lewis



LET US HELP YOU  
DISCOVER THE FUN

## SAN DIEGO'S HIGHEST-QUALITY OUTDOOR RECREATION PRODUCTS



Coast Recreation represents the finest manufacturers in the outdoor recreation industry. Whether you are looking for outdoor shade systems, site furniture, playground equipment or surfacing, we are here to help.

We also offer tailored Lunch and Learn or CEU sessions to expand your team's knowledge and development. Contact us to arrange these sessions and benefit from valuable insights and education.



Shauri Wu & Mike Eisert



714-619-0100  
info@coastrecreation.com  
www.coastrecreation.com

reproHAUS

COMPUTER  
ELECTRONICS  
TECH  
INNOVATION  
MODERN

GRAND FORMAT  
SIGNAGE  
3D PRINTING  
TECH SERVICES

BANNERS  
WINDOW GRAPHICS  
BUILDING WRAPS  
WALL MURALS  
FLOOR GRAPHICS  
TRADE SHOW  
BILLBOARDS  
VEHICLE WRAPS

WAYFINDING  
RETAIL  
ADVERTISING  
COMMERCIAL

CONSTRUCTION  
3D SIGNAGE  
DECOR  
REAL ESTATE

PROTOTYPING  
CMYK FULL COLOR  
ENHANCED ACCURACY  
ECO-FRIENDLY

MODELING  
HIGH DEFINITION  
PHOTO REALISTIC  
FAST TURNAROUND

MANAGED PRINT  
DIGITAL  
FACILITIES MANAGEMENT  
DOCUMENT MANAGEMENT  
IT SERVICES

ORDER ONLINE: [WWW.REPROHAUS.NET](http://WWW.REPROHAUS.NET)

Facebook icon Twitter icon @reprohaus







ABOUT THE AUTHOR  
**Phil Armstrong**  
CCASLA



ABOUT THE AUTHOR  
**Rich Risner**  
CCASLA



As California faces intensifying wildfire seasons, landscape architects play a vital role in protecting lives, property, and natural ecosystems through forward-thinking design. The California Council of ASLA is driving conversations and action around wildfire resilience. CCASLA board members from the four state ASLA chapters, represent all landscape architects in the state. CCASLA continues to lobby the State Board of Forestry and Fire Protection (BOF Board) over 'Zone 0' rule making.

What is zone 0? Zone 0 is a term that refers to defensible space from wildfire. It comprises the first 0 - 5 feet around a structure, including homes and other buildings larger than 120 square feet. A deck attached to a structure is considered an extension of the structure; therefore, Zone 0 starts where the attached deck ends. Zone 0 regulations are currently being developed by the Board of Forestry and Fire Protection (BOF) through an open, public process. The Board was directed to develop Zone 0 regulations by the Legislature through AB 3074 and SB 504. The regulations are scheduled to be adopted by the end of 2025.

The BOF Zone 0 Committee's most recent version of the draft rule text reflects revisions made in response to public input. The BOF Committee's goal is to propose regulations for Board adoption that will create a safer, less fire-prone environment, thereby reducing the likelihood and vulnerability of structures and neighborhoods to fires. Under CCASLA's lobbying efforts the BOF Committee acknowledged the need to balance numerous potentially competing interests, be mindful of California's diverse climate and geographical regions, and be thoughtful of the benefits of landscapes that provide shade, habitat, and aesthetics. In the latest round of interest group pleadings to the BOF, CCASLA was able to effectively limit rules for tree canopy distances from structures to preserve urban forest canopies, eliminate further restrictions on vegetation size and trees in zone 1, and mandate local jurisdictions – not state agencies – be charged with rule making and enforcement. CCASLA has continued to ask the BOF that more stakeholder meetings need to include southern California and San Diego green professionals. That request has been acknowledged as additional meetings will be scheduled in southern California in the months ahead.

In addition to Zone 0 efforts, CCASLA continues to monitor bills under consideration at the state capitol. Our board and lobbyist are currently monitoring bills that impact our industry in the state Assembly and Senate. Most legislation has had multiple readings in committee prior to a floor vote in either Assembly or Senate before moving to the other house. Here's a highlight of the bills we are currently tracking. We encourage all members to peruse the legislative bills for more details at:

<https://legiscan.com/CA/bill/>

---

## CURRENTLY MONITORED BILLS

---

### **AB 491 – Connolly**

Introduced: 2/10/2025 – *held in committee*

California Global Warming Solutions Act of 2006: climate goals: natural and working lands. The bill proposes modification to the Act of 2006 to include green alternatives for carbon sequestration.

### **AB 507 - Haney**

Introduced: 2/10/2025 – *Moved to Senate Bill 2nd reading. Referred to Housing Committee*

Adaptive reuse: streamlining: incentives.

### **AB 638 - Rodriguez**

Introduced: 2/13/2025 – *Moved to Senate Bill 2nd reading and referred to Natural Resources Committee*

Stormwater: reuses: irrigation. The bill would require the guidance to include, but not be limited to, the use of captured stormwater for irrigation to offset the use of potable water, as specified, and criteria including, among other things, pathogens and pathogen indicators and total suspended

solids.

### **AB 667 - Solache**

Introduced: 2/14/2025 – *Moved to Senate and in Appropriations Committee*

Professions and vocations: license examinations: interpreters.

### **AB 742 – Elhawary**

Introduced: 2/18/2025 – *Moved to Senate and Referred to Judicial Committee*

Department of Consumer Affairs: licensing: applicants who are descendants of slaves.

### **AB 759 - Valencia**

Introduced: 2/18/2025 – *Moved to Senate. Referred to Business and Professions Committee*

Architects: architects-in-training. This bill would authorize a person to apply to the CA board and obtain authorization to use the title "architect-in-training" after they have been identified as a candidate for licensure by the board and have successfully passed at least one division of the Architect Registration Examination.

### **AB 900 - Papan**

Introduced: 2/19/2025 – *Moved to Senate Bill 2nd reading. Moved to Suspense File (no action)*

Environmental protection: 30x30 goals: land conservation: This bill would establish the California Biodiversity Collaborative with a goal of conserving at least 30% of the state's lands and coastal waters by 2030.

### **AB 945 - Fong**

Introduced: 2/19/2025 – *Held in committee*

Density Bonus Law: incentives and concessions: green housing developments. The bill would modify the existing Density Bonus Law and require a city or county to grant additional incentives or concessions when an applicant proposes to construct a green housing development as defined in the bill.



## CCASLA CURRENTLY MONITORED BILLS (CONT.)

### **AB 1226 - Essayli**

Introduced: 2/21/2025 – *Referred to Natural Resources Committee*

Air quality: wildland vegetation management burning: permits: exemption.

### **AB 1467 - Hoover**

Introduced: 2/21/2025 – *Referred to Committee on Insurance*  
Residential property insurance: tree fire risks. This bill would exempt a residential property insurance policyholder from state and local laws, ordinances, fees, and fines associated with the removal of a tree if their insurer identifies the tree as a fire risk and the Department of Forestry and Fire Protection confirms that the tree is a fire risk.

### **SB 326 – Becker, Laird, Stern**

Introduced: 2/11/2025 – *Bill 2nd reading Referred to Committee on Appropriations*

Wildfire safety: The California Wildfire Mitigation Strategic Planning Act.

### **SB 499 - Stern**

Introduced: 2/19/2025 – *Bill 2nd reading and 3rd reading ordered. Pending referral to Assembly*

Fire prevention: home hardening: defensible space: data usage. This bill would strengthen existing code and agency oversight in assessing defensible space for fire protection.

### **SB 556 - Hurtado**

Introduced: 2/20/2025 – *Bill 3rd reading ordered & passe. Moved to Assembly*

Habitat enhancement and restoration: floodplains.

### **SB 614 - Stern**

Introduced: 2/20/2025 – *Bill 3rd reading passed. Moved to Assembly Committee for Natural Resources and Appropriations*

Potable water: nonfunctional turf. Current law from AB1572 prohibits the use of potable water for nonfunctional turf located on common areas of properties of homeowners' associations and similar properties starting January 1, 2029. This bill would prohibit that use of potable water one year earlier.

### **SB 653 - Cortese**

Introduced: 2/20/2025 – *Moved to Assembly in committee and placed on Suspense (no action)*

Wildfire prevention: environmentally sensitive vegetation management.

### **SB 795 - Richardson**

Introduced: 2/21/2025 – *In committee*

30x30 goal: state agencies: plans, policies, or regulations. Goal to codify conservation of 30% of public lands by 2030

# MEMBERSHIP UPDATE



ABOUT THE AUTHOR

**Nikki Rimmel, ASLA**

VP, MEMBERSHIP

We wish all our members a happy summer. Thanks for your continued support of the ASLA San Diego chapter! Please feel free to reach out if you have any questions about your membership.

Don't forget to take our membership survey to submit your ideas and give feedback to the chapter.

TAKE MEMBERSHIP  
SURVEY



# MEMBERSHIP

## ● 1 - 5 YEARS

**2024** Riccardo Gavardoni; Isabella De La Mora; Kimberly Ussery; Liera Ana; Pejman Taghavizargar; Adriana Calderon; Polina Karake; Marvin Saintrose; Jordan Lail; Bruce Kirschenbaum; Hadas Villalta; Tano Alejandra; Isabella Lim

**2023** Suzanne Anderson, Affiliate ASLA; Brigitta Rehn, ASLA; Morgan McNeff; Hannah Kaas; Tesha Rosenwinkel; Jennifer Chang; Eve Heitman; Seri Presley; Olessya Shy; Janelle Marquez

**2022** Michael Gallagher, ASLA; Maia Cherin, ASLA; Sarina Vega, ASLA

**2021** Michael Taylor, ASLA

**2020** Emma Smolik ASLA; Hunter Stephen, ASLA; Ashlie Zinn, ASLA; Sophia Rumpf, ASLA



## ● 6 - 10 YEARS

**2019** Philip Bronson, ASLA;  
Yi Su, ASLA

**2018** Jessica Reed, ASLA

**2017** Kristi Lin, ASLA; Cristhian Barajas, ASLA; Difan Chen, ASLA

**2016** Jay Rohrer, ASLA; Byron Brink, ASLA; Devin Murphy, ASLA; Eric Ellinwood, ASLA

## 31 + YEARS ●

**1988** Robin Shifflet

**1987** Gary Ruyle

**1986** Patrick Caughey

**1985** Michael Lee; Kurt William; Sharon Singleton

**1984** William Burton

**1983** Barbara Gilman, David Reed

**1982** Diana Womack Biegner

**1980** Gary Poeng; Richard Garbini; Joseph Chisholm

**1975** Ralph Stone

## ● 11 - 20 YEARS

**2012** Kenya Huezo, ASLA

**2010** Jonathan Avila, ASLA

**2007** Darren Jacobsen, ASLA

**2006** Ian Morris, ASLA; Michael Brennan, ASLA; Jonathan Romero, ASLA

**2005** Alexander Nagel, ASLA; David Leonard, ASLA; Azlynn Hare, ASLA

**2004** Lisa Chestnut, ASLA; Brad Lents, ASLA

## ● 21 - 30 YEARS

**2002** Martin McPhee, Affiliate ASLA; Kathryn Kanaan, ASLA; Michael Nichols, ASLA

**2001** Edward Whitehouse, ASLA

**2000** Stephen Pmerenske, ASLA

**1999** Martin Rosen, ASLA; Nelly Chung, ASLA; Michael Vail, ASLA

**1995** Joy Lyndes, ASLA; Erin Leugers, ASLA

**1993** Frank Brower, ASLA; Christopher Langdon, ASLA

# ACE MENTORSHIP & ASLA PARTNERSHIP



ABOUT THE AUTHOR  
**Trista Garcia Silva, ASLA**  
VP OF COMMUNICATIONS

**The ACE Mentor Program of America**, founded in 1994, is a no-cost after-school program that prioritizes workforce development for high school students by connecting them with experts from the design and construction industry. Laura Handschumacher, PLA with the City of Chula Vista volunteers her time with ACE. Laura and Jesus Alan Figueroa, PLA with Schmidt Design Group are the current ACE mentors at Castle Park High School. These ASLA members have been at Castle Park High School with Mr. Cesar Gamez the CTE Construction Trades Lead Instructor and ACE Coordinator since 2018.

For this school year Castle Park High School is revamping its Football field and Track, as well as modernizing the campus. Vladimir Corona with Whiting-Turner Construction and Dana Henry with Byrom Davey are the on-site Project Managers. This year presented a unique opportunity to the ACE students to walk their own campus during construction.

We walked the campus on May 21st, 2025, to look at the construction of the new athletic field complex. We donned our PPE and were led by Vladmir Corona of Whiting-Turner, as well as Mr. Gamez who made sure to speak to the relevancy of what we were looking at and to what trade and profession it could be attributed to. It is of significance that all of Mr. Gamez's





Junior and Senior ACE students received scholarships to further their education in their chosen field this year. These students received scholarships from many organizations and companies, but unfortunately not ASLA. Perhaps a new partnership beyond the Legacy Project and ACE mentorship could evolve?

These students impressed me with their seriousness and simultaneous enthusiasm for what we do as Landscape Architect professionals. As Landscape Architects we are often engaged on a large scale with many competing priorities, Laura and Jesus are prioritizing the future of our profession with their dedication to these ACE students. I hope the experience of these Castle Park High School students broadens their horizons for their future and that we might have one of them as members in our local chapter someday. For anyone looking to volunteer there are several programs running in San Diego currently or maybe start a new one yourself.



# TRUSTEE UPDATE



ABOUT THE AUTHOR

**Jon Wreschinsky, PLA, ASLA**

CHAPTER TRUSTEE

Summer is here and besides the Chapter's local offerings, there are a number of important activities that ASLA continues to offer and conduct on our behalf. Many of these activities are free to members and offer excellent opportunities to become engaged and better informed. These activities include the following:

- » ASLA's Climate and Biodiversity Action Committee has released a new hub on ASLA.org: [Product Manufacturers with Environmental Product Data](#). It collects information from manufacturers and suppliers that have products and materials with Environmental Product Declarations (EPDs), Life Cycle Assessments (LCAs), and Eco-Label certified products. The hub will be updated monthly.
- » Sessions of the [Biodiversity & Climate Action 101 for Landscape Architects webinar series](#) are continuing. The latest sessions, Navigating Environmental Product Data: A Guide for Landscape Architects, Specifiers, and Industry Partners, and Local Leadership on Climate and Biodiversity: Lessons from Nunavut, Vancouver, and Toronto can be found along with others on the ASLA website. This series remains free for ASLA members.
- » iAdvocate: ASLA advocates continue to use the iAdvocate Network to advance policies important to the profession. Recently, Government Affairs launched a campaign to protect funding for the Land and Water Conservation Fund (LWCF). Additionally, Government Affairs launched a campaign to support climate policies - the [Excess Urban Heat Mitigation Act](#), which would provide funding to communities for landscape architecture techniques that address urban heat.

- » Advocating for Biodiversity Policies: On May 19, ASLA submitted [formal comments](#) opposing a proposed rule that would weaken protections under the Endangered Species Act (ESA) by eliminating habitat destruction from the definition of "harm." The change, proposed by the U.S. Fish and Wildlife Service and the National Marine Fisheries Service, would undo more than 40 years of critical protections for endangered wildlife.
- » ASLA has launched a webinar series, [Making the Economic Case for Landscape Architecture](#), which explores how to better understand the many economic benefits of nature-based solutions that landscape architects plan and design. The series, free for members and hosted by ASLA CEO Torey Carter-Conneen, Hon. ASLA, builds on the economic analyses ASLA released in 2024 and will help guide a new economic research plan for the landscape architecture community.

The Google map and list of [historic landscapes](#) that have been documented through the Historic American Landscapes Survey (HALS) have been updated on the ASLA website. When this information was first added in 2014, there were 466 HALS sites on the list; there are now 1,063 surveys in the HALS collection.

Lastly, all are encouraged to consider attendance at the annual Conference on Landscape Architecture in New Orleans, October 10-13. Registration information can be found at <https://www.aslaconference.com/>.



# UPCOMING EVENTS & MEETINGS

## AUGUST

9

**SKETCH CRAWL BALBOA PARK WITH ARTIST JACQUELINE GOLD: DRAWING THE SPARK: "FROM THUMBNAILS TO RENDERED CONCEPTS".**

**DETAILS + REGISTRATION**

GENEROUSLY SPONSORED BY  
BLICKS ART SUPPLIES AND  
SPRUCE AND GANDER



**BLICK®**

14-15

**30X30 PARTNERSHIP 2025 SUMMIT | SAN DIEGO NATURAL HISTORY MUSEUM**

**DETAILS + REGISTRATION**

20

**EXECUTIVE COMMITTEE MEETING 6PM | ONLINE**

**CHECK OUT OUR WEBSITE FOR ALL OUR CURRENT & UPCOMING EVENTS**

**ASLASD EVENTS**

## SEPTEMBER

10

**CREF WEBINAR | COMPOST SPECIFICATIONS & HOW TO MEET THEM, \$19 USCC MEMBERS, \$29 NON**

**DETAILS + REGISTRATION**

15

**MILENKO MATANOVIC - LESSONS LEARNED FROM A LIFETIME OF ART, COMMUNITY BUILDING AND GATHERING SPACES | 5:30 PM - 7:00PM, BALBOA PARK SANTE FE ROOM**

**DETAILS**

17

**EXECUTIVE COMMITTEE MEETING 6PM | IN PERSON TBD**

18

**SAVE THE DATE: LECTURE BY ALEJANDRA HINOJOSA, ASLA, SPECIALIST AT LPA DESIGN STUDIOS, INSIGHTS INCLUDE:**

- DECARBONIZING THE DESIGN PROCESS
- DECARBONIZING SPECIFICATIONS

19

**MILENKO MATANOVIC - TRAINING WORKSHOP | 9:30 AM - 4:00PM, ARTS, NATIONAL CITY**

**DETAILS**

## OCTOBER

10-13

**ASLA NATIONAL CONFERENCE NEW ORLEANS, LA**



**DETAILS + REGISTRATION**

15

**EXECUTIVE COMMITTEE MEETING 6PM | ONLINE**

27

**ASLA SAN DIEGO ANNUAL GOLF TOURNAMENT, MADERAS COLF CLUB | 10AM**

**DETAILS + REGISTRATION**

# SAN DIEGO CHAPTER 2025 EXECUTIVE COMMITTEE

## **PRESIDENT**

**Kathryn Kanaan, ASLA**  
KDA Landscape Architects

## **PRESIDENT ELECT – FUNDRAISING**

**Brad Lents, ASLA**  
Spurlock Landscape Architects

## **SECRETARY**

**Alexander Wade, ASLA**  
Rick

## **PAST PRESIDENT**

**Jacqueline Higgins, ASLA**  
Forever Balboa Park

## **VP COMMUNITY OUTREACH**

**Difan Chen, ASLA**  
KTUA Landscape Architecture & Planning

## **VP PROGRAMS/EDUCATION**

**Kenya Huevo, ASLA**  
LPA Design Studios

## **PROGRAMS/SOCIAL CO-CHAIRS**

**Joe Dodd**  
Linear Landscape Architecture

**Anne-Emilie Gold**  
Gravel to Gold, Inc.

## **VP VISIBILITY/COMMUNICATIONS**

**Trista Garcia Silva, ASLA**  
StudioWC Architecture + Engineering

## **CHAPTER TRUSTEE**

**Jon Wreschinsky, PLA, ASLA**  
Adjunct Professor

## **CALIFORNIA COUNCIL OF ASLA**

**Phil Armstrong, ASLA**  
GroundLevel

## **Rich Risner, ASLA**

Grounded Landscape Architecture

## **EMERGING PROFESSIONAL CO-CHAIRS**

**Gwen Stark, ASLA**  
NAVFAC SW

## **Fernanda Suarez, ASLA**

MIG

## **CLIMATE ACTION COMMITTEE**

**Stephanie Green, ASLA**  
City of San Diego

## **GOLF COMMITTEE CO-CHAIRS**

**Jeff Dolan**  
Hunter Industries

## **Brad Lents, ASLA**

Spurlock Landscape Architects

## **EXECUTIVE DIRECTOR**

**Amy Conrad**  
Conrad Public Relations & Marketing

## **ASLASD NEWSLETTER DESIGNER**

**Kari Cureton**  
Sarit + State Creative Studio



## ASLA NATIONAL EXECUTIVE OFFICERS

### **PRESIDENT**

Kona Gray, FASLA

### **PRESIDENT ELECT**

Bradey McCauley, FASLA

### **IMMEDIATE PAST PRESIDENT**

SuLin Kotowicz, FASLA

### **CEO**

Torey Carter-Conneen

### **VP PROFESSIONAL PRACTICE**

Jean Senechal Biggs, ASLA

### **VP COMMUNICATIONS**

Monique Bassey, ASLA

### **VP EDUCATION**

Ashley Steffens, ASLA

### **VP FINANCE**

Chris Della Vedova, FASLA

### **VP GOVERNMENT AFFAIRS**

Om Khurjekar, ASLA

### **VP MEMBERSHIP**

April Westcott, FASLA

### **SECRETARY**

Curt Millay, ASLA

### **TREASURER**

Greg Cohen

### **PARLIAMENTARIAN**

Susan Jacobson, ASLA

## CALIFORNIA COUNCIL OF ASLA 2025 EXECUTIVE BOARD

### **SIERRA CHAPTER**

Andrew Wickham, ASLA  
(Co-Secretary)

Dalton La Voie, ASLA  
(Co-Secretary)

### **SOUTHERN CALIFORNIA CHAPTER**

David Tatsumi (Co-Treasurer)

Stephanie Landregan, ASLA  
(Co-Treasurer)

### **SAN DIEGO CHAPTER**

Phil Armstrong, ASLA (Gov't Affairs)  
Rich Risner, ASLA

### **NORTHERN CALIFORNIA CHAPTER**

Justin Richardson (Vice President)  
Brodie Hegg, ASLA (President)

### **LOBBYISTS**

Jason Ikerd  
Edelstein Gilbert Robson & Smith, LLC

### **LATC CHAIRMAN**

Pamela Brief

### **LATC EO/PROGRAM MANAGER**

Laura Zuniga

### **CCASLA EXECUTIVE DIRECTOR**

Vicki Phillipy

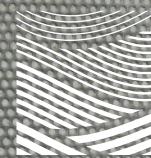
[cc-asla.org](https://cc-asla.org)

# THANK YOU TO OUR **2025 SPONSORS**

## T.B. PENICK & SONS, INC.



BENCHMARK LANDSCAPE ► GREEN PRODUCT SALES/IMPERIAL TECHNICAL SERVICES  
NATIVE WEST ► QCP ► WEST COAST TURF



## Connect with Us



[asla-sandiego.org](http://asla-sandiego.org)

Mailing Address:  
664 Blackthorne Avenue  
El Cajon, CA 92020

[aslasd@asla-sandiego.org](mailto:aslasd@asla-sandiego.org)